



Stratton Mountain Resort

Uniquely located on over 4000 acres. In the Green Mountains of southern Vermont, the Stratton Mountain Resort is an easy drive from the New York and New England metropolitan areas.

Air Travel

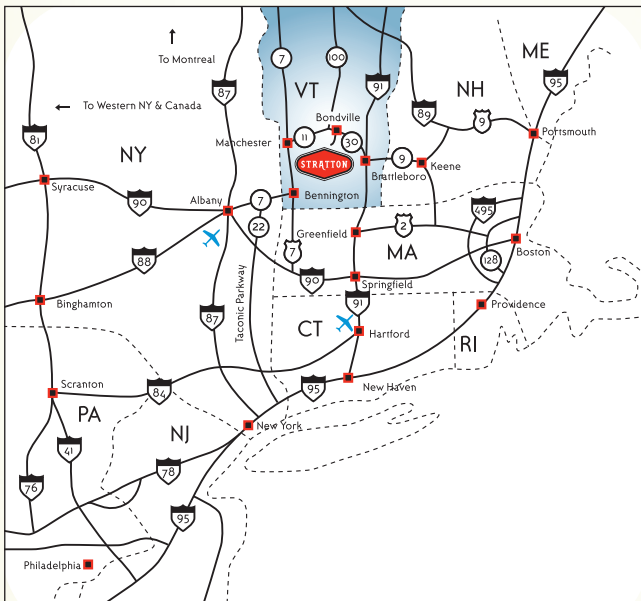
Albany International Airport (ALB): Albany, New York
80 miles 1½ hours

Logan International Airport (BOS): Boston, MA
139 miles 2¾ hours

Bradley International Airport (BDL): Hartford, CT
154 miles 2¾ hours

Land Travel

City	Miles	Time
Albany, NY	81	1½
Hartford, CT	120	2¼
Boston, MA	139	2¾
Montreal, QC	210	4
New York, NY	205	4
Philadelphia, PA	335	6
Toronto, ON	465	8½
Washington, DC	470	8½



Public Transportation

Bus Service

Service provided from NYC and Boston areas to Manchester, Vermont.

Trail Service

Service provided from NYC and Boston areas to Brattleboro or Rutland, Vermont.

Resort Shuttle Service

For your convenience, shuttle service runs throughout Stratton's resort providing transportation to the village shops and restaurants, lodging properties, sports center, meeting facilities and golf course.

Fast Facts

425 sleeping rooms
Unit types: Hotel rooms, studios, suites and 1-5 bedroom Condos
27 flexible venues totaling over 40,000 square feet.

Average Weather Patterns

Average Monthly Temperatures & Precipitation						
	Jan.	Feb.	Mar.	Apr.	May	June
Average High	32°	35°	44°	57°	69°	78°
Average Low	9°	10°	22°	32°	42°	52°
Precipitation	3.3"	2.9"	3.8"	3.9"	3.8"	3.7"
Snowfall	19"	18"	13"	3"	0"	0"
	Jul.	Aug.	Sept.	Oct.	Nov.	Dec.
Average High	83°	81°	73°	62°	49°	36°
Average Low	57°	55°	48°	36°	29°	15°
Precipitation	3.4"	3.7"	3.6"	3.5"	4.0"	4.0"
Snowfall	0"	0"	0"	0"	5"	18"
Annual Totals						
High	Low		Precipitation		Snowfall	
58°	34°		43.6"		76"	

Environment

The Stratton Mountain Community has build award-winning programs, earned nationwide distinctions, including family programs, and bolstered its commitment to the environment in an integrated, resort-wide effort to improve the Mountain experience for all guests.

INTRAWEST

- Copper, CO
- Mammoth, CA
- Panorama, BC
- Sandestin, FL
- Tremblant, QC
- Whistler, BC



Stratton Mountain Resort Lodging amenities include: central check-in, open 24 hours; daily maid service; room charge privileges; voice messaging, Sports Center access and free parking.

HOTEL ACCOMMODATIONS

Lifeline Lodge

Stratton's Lifeline Lodge features traditional Vermont lodging with rustic appeal, comfortable, economical rooms, friendly service and is located within walking distance to the Village.

Outdoor Pool and Spa	Pet Friendly
Front Desk / Lobby	Coffee Service
Daily Maid Service	Cable Television

Inn at Stratton Mountain

The Inn at Stratton Mountain offers 120 guest rooms and is a full service hotel with friendly service and a warm, inviting atmosphere. The Inn is a short walk to the village and offers a complimentary resort shuttle.

Front Desk / Lobby	Outdoor Pool
Restaurant and Bar	Indoor Hot Tubs and Sauna
Daily Maid Service	Cable Television
Hair Dryers / Coffee Service	Game Room

CONDOMINIUMS

Long Trail House

Stratton's Long Trail House is among the most inviting resort accommodations in Vermont. Units range from studio suites to one and two bedroom homes with unique charm and beautiful furnishings.

<i>Amenities</i>	<i>Unit Amenities</i>
Outdoor Heated Pool	Living Room
Three Outdoor Hot Tubs	Fully Equipped Kitchens
Sauna	Cable Television / VCR
Concierge Service	Gas Fireplace
Underground Parking	Air Conditioning
Washer / Dryers	High Speed Internet Access

Long Trail House Penthouse

The Penthouse at the Long Trail House is 3,000 square feet of absolute luxury located on the top floor of the Long Trail House. With fabulous views of the Village and Mountain, making it a lodging experience like no other.

Five Bedrooms	Large Living / Dining Room Area
State-of-the-art Kitchen	6 Baths (1 in each bedroom)
Media Room	High Speed Internet Access

Rising Bear Lodge

The newest addition to the Commons community is just a short walk to the village shops and restaurants.

<i>Amenities</i>	<i>Unit Amenities</i>
Outdoor Heated Pool	Living / Dining Room Area
Outdoor Hot Tubs	Fully Equipped Kitchens
Underground Parking	Cable Television / VCR
High Speed Internet Access	Gas Fireplace
Washer / Dryer	Air Conditioning

Stratton Condominiums

Private and comfortable, Stratton's condominiums are tucked away in quiet spots around the Resort.

One-Five Bedroom Units	Fully Equipped Kitchen
Living / Dining Room	Washer / Dryer
Woodburning Fireplace	



Inn at Stratton Mountain

The Inn at Stratton Mountain offers over 8,000 square feet of meeting space that is available year round and can accommodate groups up to 400. From the flexibility of the spacious Green Mountain Ballrooms to the warmth of the fireplace in the Wentworth Room and over to the great lawn by the Sugar Shack, we have event space that can accommodate any style event.

- Green Mountain Ballrooms
- Wentworth Room
- Bear Bottom Pub
- Stone Chimney Grille
- Green House Room
- Sugar Shack

The Resort

Throughout Stratton Resort you will find flexible meeting venues that provide privacy, breathtaking views, convenient locations and can accommodate meeting and events from 20 – 600.

- Tenderloins
- Blue Moon
- Base Lodge East Wing
- Base Lodge West Wing
- Bears Den
- Bear's Cave
- Grizzly's
- Sun Bowl

The Stratton Mountain Club

The Club is Stratton's most recent addition. This private facility was built with native stone, Vermont craftsmanship, and a fundamental respect for our mountain setting. The Club features four unique, oversized spaces furnished with quality and charm. As a private club, space availability varies with the season.

- Timberhall
- Wild Things
- Luna
- Great Room

The Long Trail House

Stratton's inviting Long Trail House offers quiet meeting space with a great location that is perfect for the small corporate meetings. The Long Trail Penthouse is 3,000 square feet of absolute luxury with fabulous views of the Village and mountain. It's a perfect place for a family getaway, a ski escape for a group of close friends, or even a rewarding corporate retreat mixing work and play.

- Board Room
- Penthouse
- Library

Lifeline Lodge

Stratton's Lifeline Lodge is a traditional Vermont lodge with a rustic appeal and a great location. Offering two very unique rooms for meeting and banquet events.

- Café on the Corner
- Portabello's

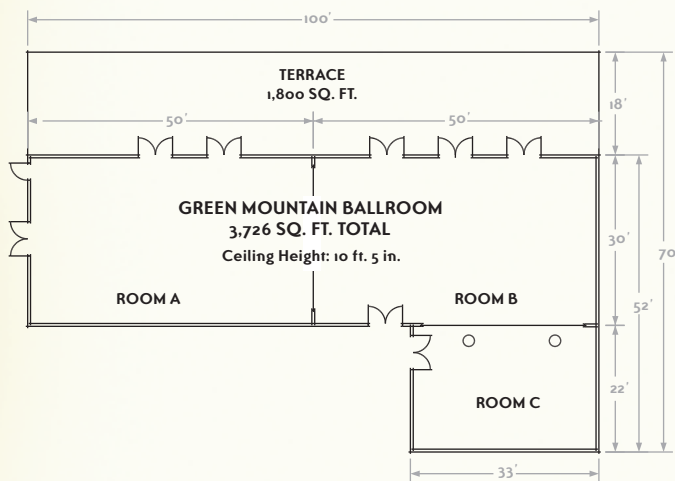


		Total Sq. Feet	Theatre	Classroom	Hollow Square	Reception	Buffet	Banquet
INN AT STRATTON VENUES	Green Mountain A, B and C	3,726	400	250	—	390	275	300
	Green Mountain A	1,500	160	100	40	155	110	120
	Green Mountain B	1,500	160	100	40	155	110	120
	Green Mountain C	726	70	45	16	70	45	55
	Green Mountain Terrace	1800	—	—	—	—	—	—
	Wentworth	1,419	100	70	25	100	75	80
	Bear Bottom Pub	1,763	—	—	—	90	—	—
	Stone Chimney Grille	2,324	240	150	—	200	165	175
	Green House Room	285	—	10	10	15	10	10
	Sugar Shack Lawn	—	—	—	—	—	—	—
THE RESORT VENUES	Tenderloins	900	60	45	20	75	50	55
	Tenderloins Deck	964	—	—	—	25	25	25
	Blue Moon Upper Level	329	—	—	—	15	15	15
	Blue Moon Lower Level	998	—	—	—	25	15	20
	Base Lodge East	2,967	300	185	—	280	200	225
	Base Lodge West	2,967	300	185	—	280	200	225
	Bears Den	950	75	40	20	80	60	65
	Grizzly's	3,600	—	—	—	260	60	90
	Grizzly's Deck	1,320	—	—	—	50	50	50
	Bear's Cave	1,616	100	66	22	100	65	70
	Sun Bowl Upper Level	2,460	215	130	—	200	130	150
Sun Bowl Lower Level	2,496	215	130	—	200	130	150	
THE CLUB VENUES	Timberhall	3,450	250	200	—	200	200	200
	Wild Things	688	40	35	16	25	25	25
	Luna's	1,122	—	—	—	65	65	65
	Great Room	1,440	—	—	—	150	—	—
THE LONG TRAIL HOUSE VENUES	Board Room	260	—	—	13	—	—	—
	Library	480	30	20	13	30	20	25
	Penthouse	3,000	—	—	—	—	—	—
LIFTLINE LODGE VENUES	Café on the Corner Upper Level	612	—	—	—	30	30	30
	Café on the Corner Lower Level	720	—	—	—	55	55	55
	Portabello's	648	30	20	10	30	20	25

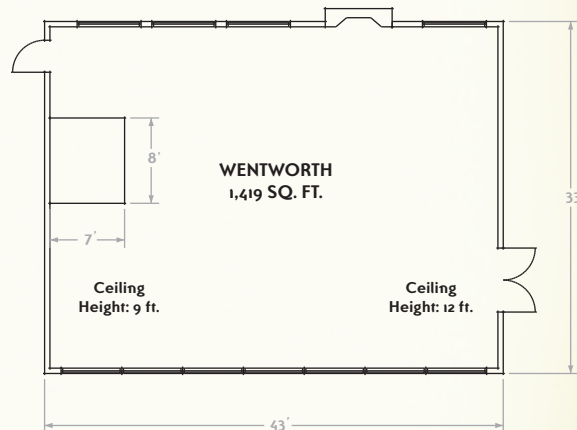
** Please take into consideration Special Setup including dance floor, stagers, buffets etc. takes away from room capacities.



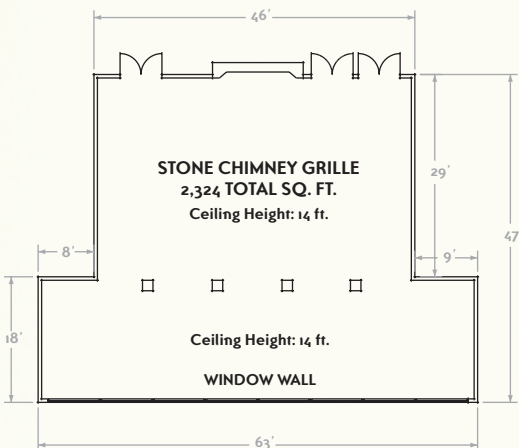
GREEN MOUNTAIN BALLROOMS



WENTWORTH



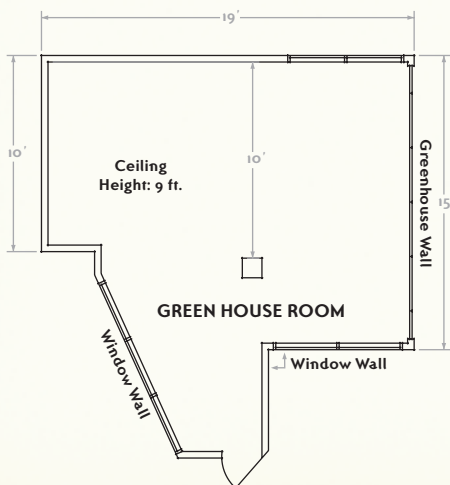
STONE CHIMNEY GRILLE



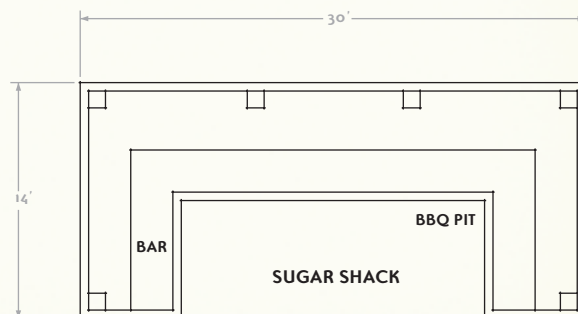
BEAR BOTTOM PUB



GREEN HOUSE ROOM

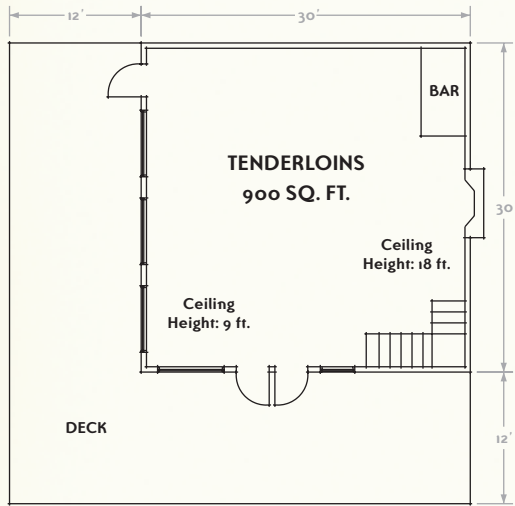


SUGAR SHACK

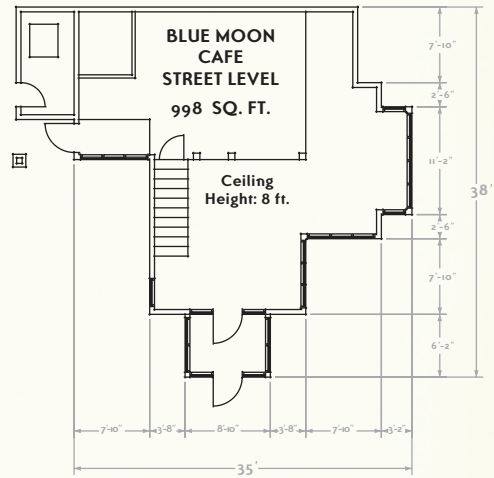




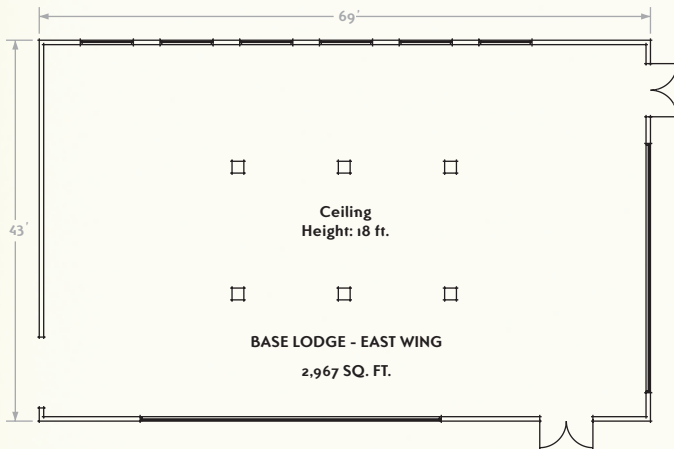
TENDERLOINS



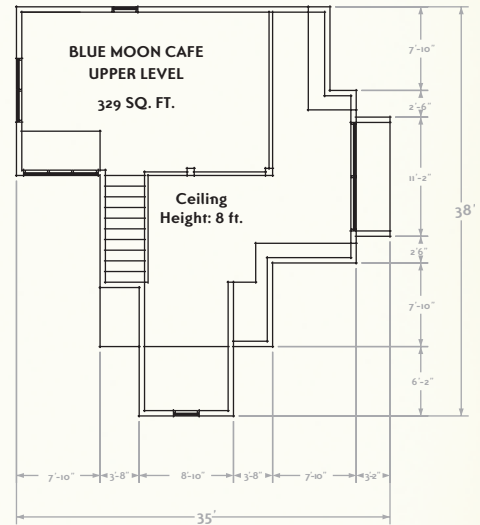
BLUE MOON LOWER LEVEL



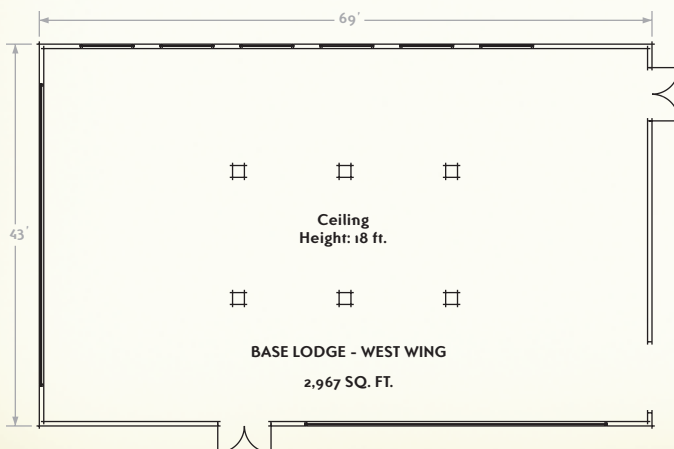
BASE LODGE EAST WING



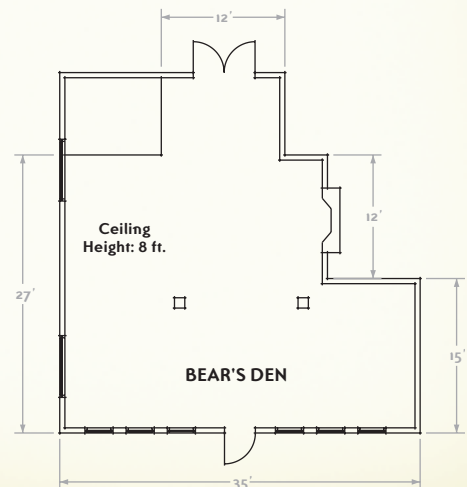
BLUE MOON UPPER LEVEL



BASE LODGE WEST WING

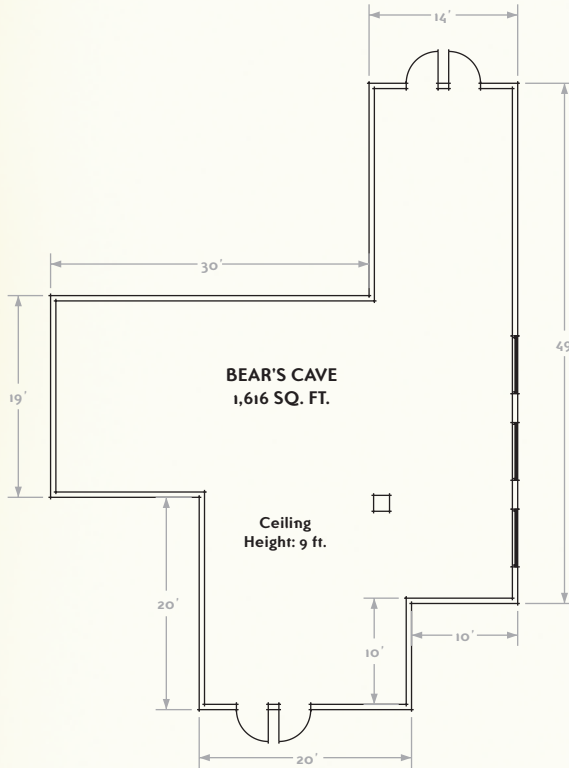


BEAR'S DEN

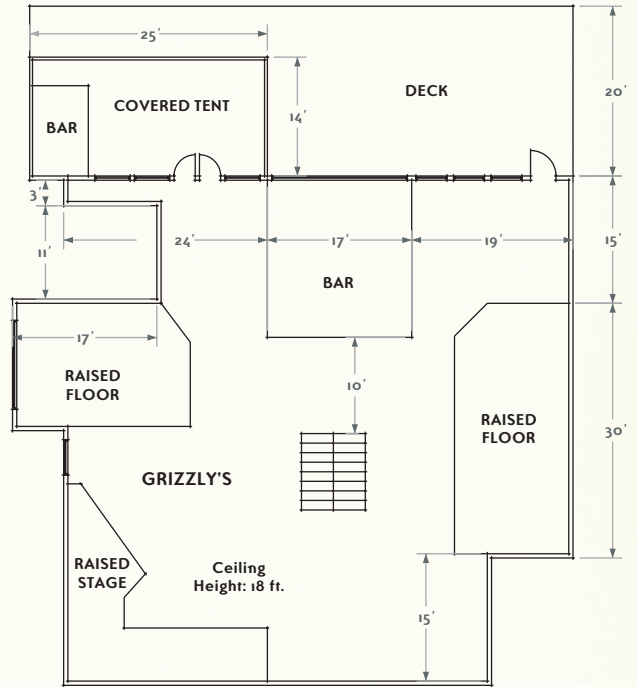




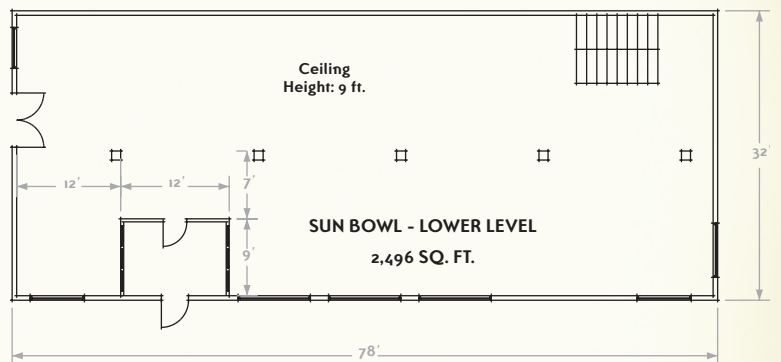
BEAR'S CAVE



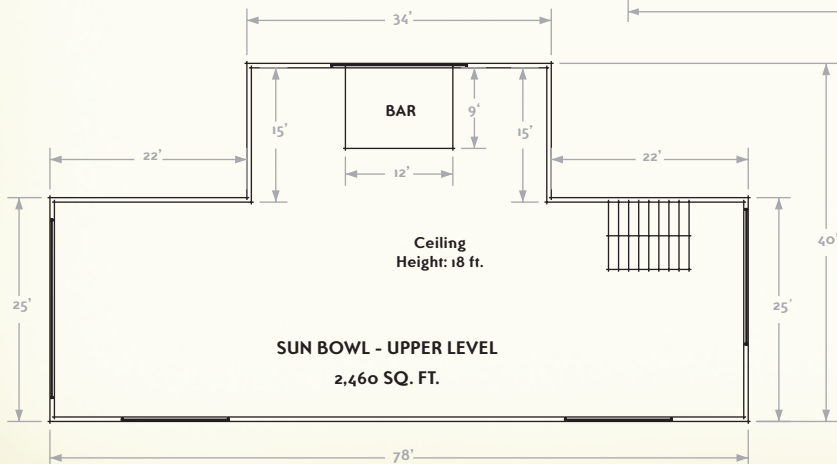
GRIZZLY'S



SUN BOWL LOWER LEVEL

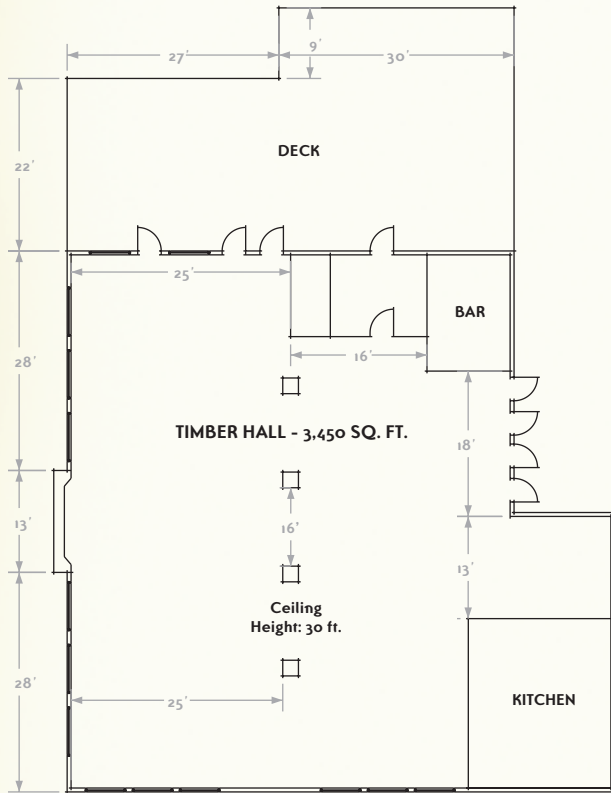


SUN BOWL UPPER LEVEL

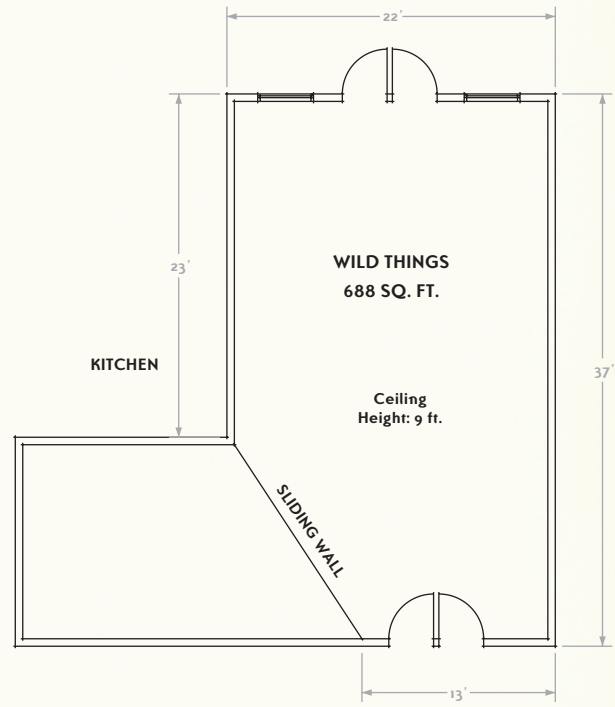




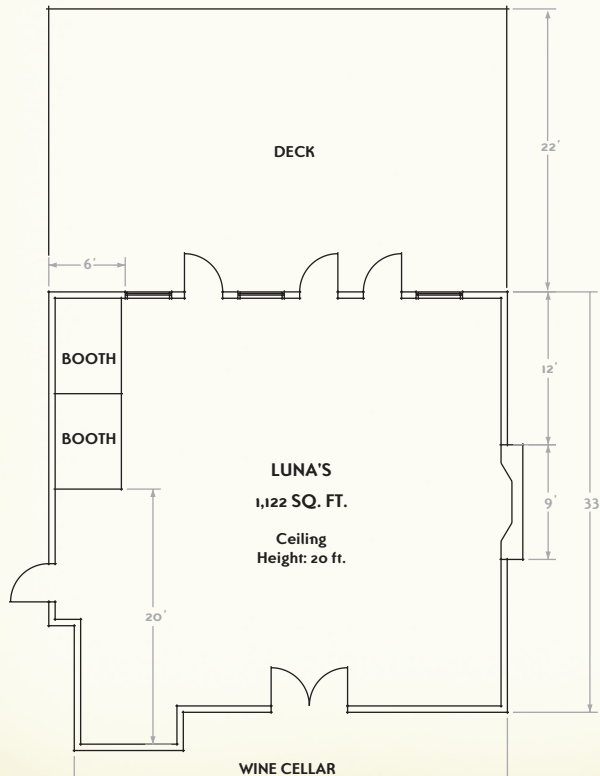
TIMBERHALL



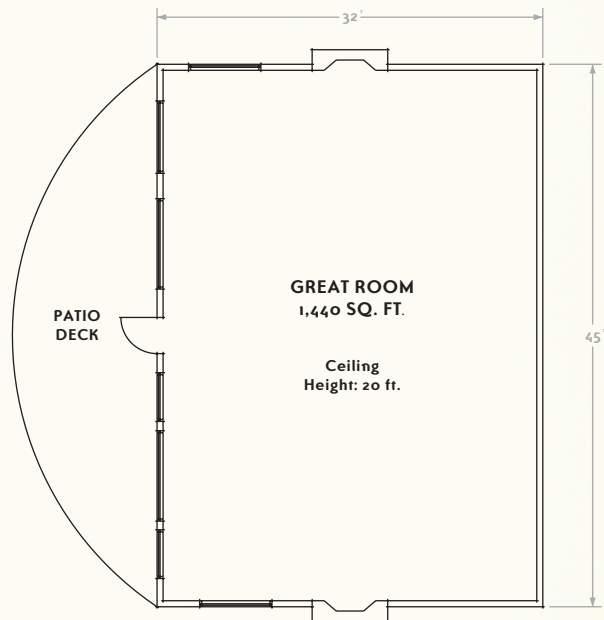
WILD THINGS



LUNA'S

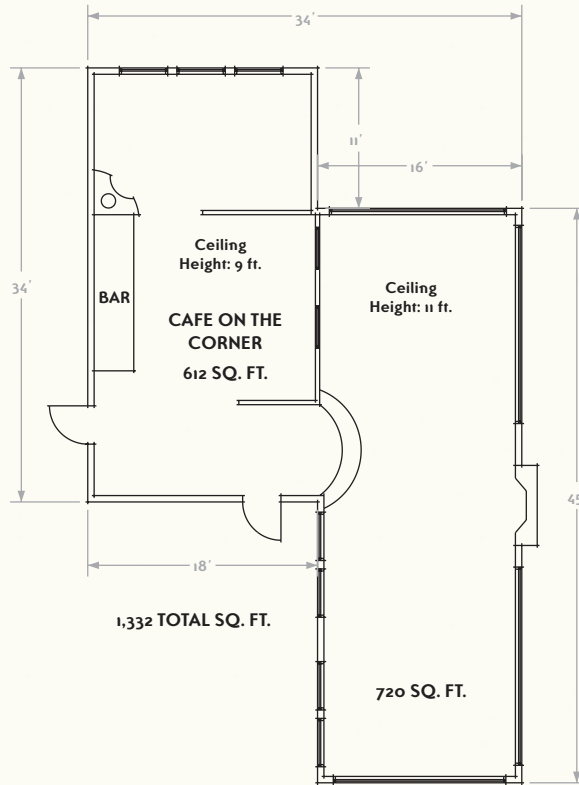


GREAT ROOM

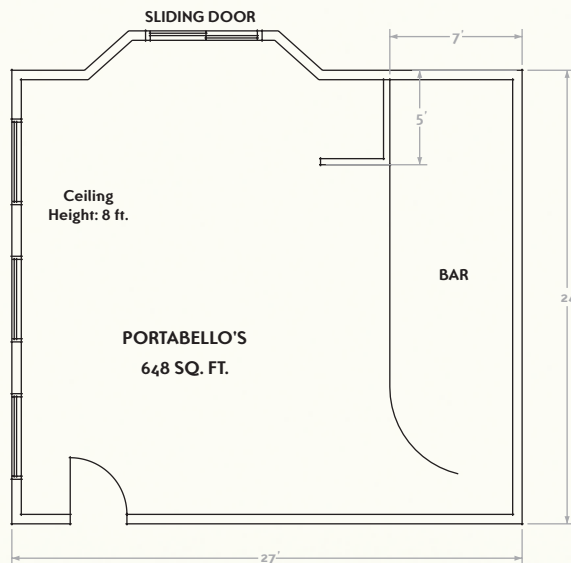




CAFÉ ON THE CORNER



PORTABELLO'S





Nature Hikes

Southern Vermont with its varied terrain, temperate climate, and beautiful green mountains has been a favorite of outdoor enthusiasts. Explore Stratton Mountain's trail system, including the Appalachian Long Trail.

Scenic Gondola Rides

Ride to the top of southern Vermont's highest peak for spectacular mountain views.

Canoe and Kayak Tours

Canoe and kayak enthusiasts will delight in the many rivers, streams and lakes that crisscross Vermont. With a variety of waterways to explore, you can float or paddle through forest thicket and across farmland, while the Green Mountains stretch out in the distance.

Kidskamp

You can tell how much Stratton loves kids by how much kids love Stratton! From 6 weeks young to 12 years old, Stratton's KidsKare and KidsKampers fill their days with memorable adventures while you make some memories of your own.

Golf Course

Stratton's 27-hole championship course has been host to six LPGA events and features three distinct nine-hole layouts.

Golf School

Stratton's renowned Golf School was founded by Arnold Palmer in 1969. The golf school is a complete, 22-acre teaching facility with 500 feet of weather proof hitting areas, specially designed trouble shot improvement areas and state-of-the-art video swing analysis. Our dedicated teaching professionals are committed to helping each student develop and retain a natural, comfortable swing.

Tennis School

The Gunterman Tennis School at Stratton Mountain embodies the unique, common-sense teaching style of founder Kelly Gunterman, U.S.P.T.A. From collegiate competitor to teaching professional at the John Newcombe Tennis Center to founder of his own network of tennis schools, Gunterman has established a reputation for programs that produce better players. The Gunterman Tennis School and the Junior Tennis Camp are consistently rated among the top schools in North America.

Sun Bowl Ranch

If you want to experience all of Vermont's scenic beauty, come take a ride with us at the Sun Bowl Ranch. John and Letitia Sisters and their exceptional staff (both 2 & 4 legged), pride themselves on a friendly and professional atmosphere. Featuring trail rides, picnic rides, lessons and summer camps.

Stratton Sports Center

A state-of-the-art private athletic club catering to mountain homeowners and resort guests.

- 75-foot indoor heated pool
- Hot tub and steam rooms
- Aerobic and weight rooms
- Basketball and squash courts
- Indoor and outdoor tennis courts
- Fitness classes
- Tanning
- Massage



The Course

Stratton's demanding 27-hole layout has been home to six LPGA tour events and Golf Digest has described it as one of the top resort courses in New England. The Forest, Lake and Mountain "nines" offer a challenge to all who play them and great personal satisfaction to all who play them well.

The School

Founded in 1969 by Arnold Palmer, the Stratton Golf School is a complete, 22-acre facility with more than 4,500 square feet of air-conditioned classrooms, 500 feet of weatherproofed hitting areas, specially designed trouble shot improvement areas, and state-of-the-art video swing analysis.

- Low student to professional ratio for great personal attention
- Sophisticated teaching aides, including video swing analysis
- A bound, 72-page personal instruction book
- Complimentary golf (with cart) after each day of instruction
- Complimentary breakfast and lunch for each day of instruction
- Locker rooms
- Complimentary resort shuttle

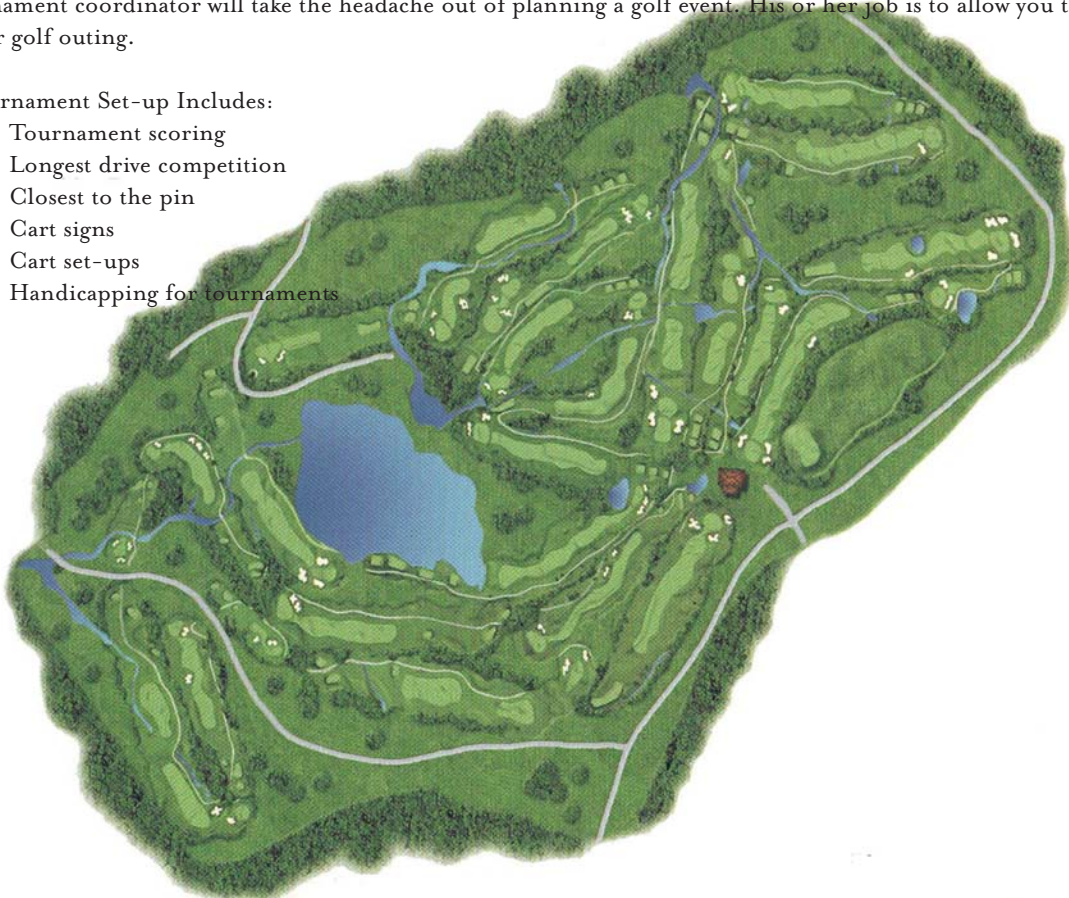
Group Information

For group and corporate outings, the event coordinator will be assigned a tournament coordinator from our golf staff. The tournament coordinator will assist the group leader/meeting planner in all of their needs prior to the event. This includes setting up the tournament format, personalized golf cart signs, and assisting with contest ideas.

The tournament coordinator will take the headache out of planning a golf event. His or her job is to allow you to relax and enjoy your golf outing.

Tournament Set-up Includes:

- Tournament scoring
- Longest drive competition
- Closest to the pin
- Cart signs
- Cart set-ups
- Handicapping for tournaments





The Mountain

Stratton Mountain features 583 acres of terrain, 6 terrain parks and 13 lifts including four high-speed, six passenger lifts and a 12-passenger summit gondola.

- Skiing/Snowboarding
- Snowmobiling
- Kidskamp

Nordic Center

With over 15km of well-marked, groomed trails for cross-country skiing and snowshoeing, Stratton provides countless places to experience nature at its best.

- Cross-country skiing
- Snow shoeing

Sun Bowl Ranch

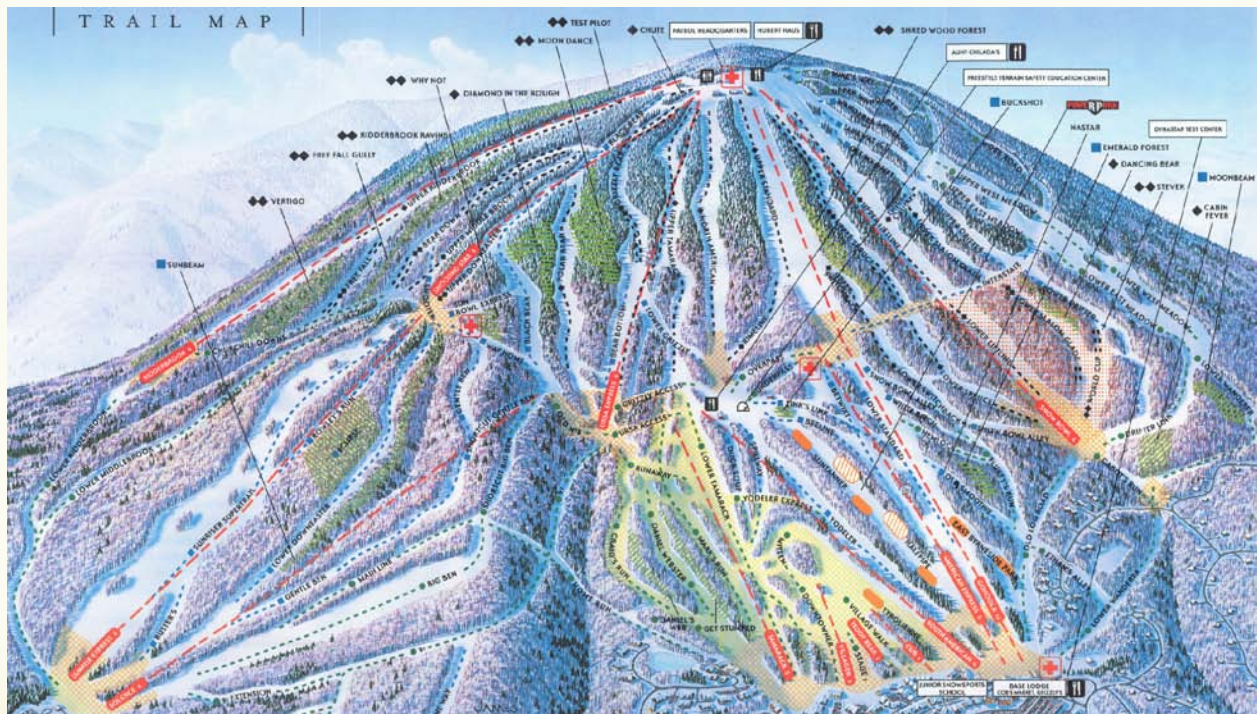
Just imagine...a jingling sleigh ride gliding through the winter woods under the stars to a roaring bonfire where you are treated with s'mores and hot cocoa...you're here at the Sun Bowl Ranch on Stratton Mountain.

- Horse drawn sleigh rides

Stratton Mountain Sports Center

The Sports Center is state-of-the-art private athletic club catering to mountain homeowners and resort guests.

- 75-foot indoor heated pool
- Hot tub and steam rooms
- Aerobic and weight rooms
- Basketball and squash courts
- Indoor and outdoor tennis courts
- Fitness classes
- Tanning
- Massage





Bogner: Featuring New England's largest selection of the latest European outerwear and casual wear for men and women.

Stratton Sports: Come in for your snow necessities and for our great selection of logo wear. Men's, women's and a large selection of children's wear too! We also specialize in high performance ski and snowboard rentals.

Decorative Interiors, Inc.: Indulge in the elements and objects that nourish the body, mind and soul and experience all the senses. Touch a luxurious cashmere throw. Smell the fresh scent of lavender soap. Taste the bursting flavors of Mediterranean spices and see a large selection of beautiful lamps, accessories and upholstered furniture for your country home.

Equipe Sport: The widest selection of outdoor gear in southern Vermont. Every day our staff of outdoor enthusiasts field test our bikes, shoes, kayaks, canoes, skis, snowboards and clothing. Tell us what you want to do and we will tell you what works best and under what conditions.

First Run: The mountain's ski shop where you will find a friendly and knowledgeable staff and great selection of outdoor gear and apparel from skis and snowboards to canoes and kayaks.

Gallery North Star: Vermont's premier fine art gallery since 1975. Original paintings & sculptures by over 30 Vermont-based artists.

Mountainside Photo: On-mountain photography, film and batteries. North Country themed gifts and accessories. New this season, framing service. Purchase a photo of theirs and bring in your own for high quality frame work.

Mountain Sweets: Fine chocolates, candy, Vermont maple products, Stratton logo bears, and stuffed animals from Mary Meyer. Give that special person a gift from the candy store, they will love it!

Stratton Clothing Company: This eclectic shop features the finest in unique logo wear, stylish gifts for friends and family, ski themed furnishings and gifts include Stratton pottery, photo frames and more!

The North Face: We have the largest selection of North Face products in the area: skiwear, outerwear, fleece, footwear, back packs, accessories, and as always, special orders.

Von Bargaen's: Von Bargaen's Jewelry, LLC specializes in designer collections in platinum, 18 karat gold and sterling silver. Escape the snow and come view the exceptional designs of Alex Sepkus, Mark Patterson, Kwiat, John Hardy, Roberto Coin and others. Von Bargaen's also custom designs a collection of New England themed charms, which include ski boots, the Stratton logo and the Stratton Mountain Bear.

Syd and Dusty's: Voted best in New England. We are your exclusive Burton Coalition Dealer, where you can find the largest selection of Burton in the country. If you are looking for the latest in equipment and outerwear, we have it all. New this year to keep you in style off the hill is Analog clothing with street-smart style. To keep you in step, Gravis footwear will keep you on your toes.

Pipe Dreams: Please stop in to visit our new staff at Pipe Dreams. We carry a complete selection of the hottest snowboards and apparel.

The Spa at Stratton: Treat yourself to a relaxing mountainside spa experience after carving up the slopes in the crisp Vermont air. Visit us in the village, where the daily ritual of personal service has been elevated to an art. You'll enjoy signature treatments performed by our highly qualified massage and body works therapists, our nationally & internationally certified estheticians, make-up artists, professional hair stylists and nail technicians.



Stratton's charming pedestrian Village offers a wide variety of eclectic shops and restaurants ranging from small cafés to fine dining establishments. During the winter months, heated cobblestone walkways provide easy access for skiers, snowboarders and shoppers. Summer and fall bring street festivals, sidewalk sales, crafts and live music. Stratton's village holds something for everyone.

Blue Moon Café: Offering a menu that is "Out of this World!" Featuring specialty coffee drinks, fine desserts, soups and sandwiches. The Blue Moon will stimulate your mind and your senses!

Café on the Corner: Serving a "Vermont country breakfast with a twist" in a cozy atmosphere. Our exciting menu offers something for everyone. Eggs to order, gourmet omelettes, Belgian waffles, homemade buttermilk pancakes with pure maple syrup are just a few of our specialties.

Cob's Market: Offering a full breakfast, traditional grill fare and specialty sandwiches and salads made to order. ❄️

Luna: Luna offers exquisite, fine dining in the areas' most exclusive, private club setting. Public dining is restricted and permitted by reservation only.

Mulberry Street: A taste of Little Italy. Pasta & Pizza. Located at the south end of the Village. Fine wine by the bottle or glass. Espresso and Cappuccino. Full service bar including stocked cigar humidor.

Mulligan's: Featuring great burgers, ribs, steaks, seafood and more, in a comfortable and inviting atmosphere.

Partridge Deli and Provisions: Gourmet shop and deli with breakfast sandwiches and the best wraps in town! Partridge also offers custom platters, gift baskets and wine plus prime meats, fresh produce and fresh baked breads and desserts.

Stone Chimney Grille: Featuring a wide selection of entrees. Seafood, pasta, steak, chicken and our own house smoked ribs. If it is something lighter you crave, we offer a variety of soup, salad, sandwiches and appetizers.

Tenderloins: Located at Stratton Mountain Country Club. Offering sumptuous sandwiches, salads and barbeque. You are invited to experience the prettiest view on Stratton. Open for lunch during the summer months. ☀️

Verdé: Come see why people rave about Verdés fresh Mediterranean cuisine. Experience the cooking close up at our chef's table or dine in our cozy dining room. We have a well-chosen wine list, specialty martinis, and a fine selection of spirits. We are sure you will find Verdé an experience to remember.

Bear's Den: The Bear's Den offers a casual full service menu in a traditional atmosphere. ❄️

Green Door Pub: The best in Vermont – pool tables, air hockey, foosball, big screen TV and the best juke box in town! Featuring weekly beer and food specials.

Grizzly's: The best après ski bar in the area! Offering wood fired pizza, outdoor BBQ, full service lunch, après ski menu, beer specials, live music and more. ❄️

Bear Bottom Pub: The Bear Bottom Pub at the Inn at Stratton offers hearty pub fare, a selection of Vermont beers, cozy fireplace, television and a pool table.

❄️ Open during the winter season only

☀️ Open during the summer season only



Weston Playhouse

Vermont's oldest summer theater provides entertainment through the summer and fall at this picturesque playhouse on the village green. Weston, VT: 20 minutes

Green Mountain Flyer

Enjoy views of Vermont's mountains and valleys aboard vintage passenger coaches built in the 1930s–1950s.

Bellows Falls, VT: 45 minutes

The Archery School

Groups will enjoy lessons followed by a fun competition that involves shooting traditional targets with recurve bows over a range of distances. Manchester, VT: 20 minutes

Off-Road Driving

Visit the purpose-built 4x4 driver-training course set on 80 acres. You will drive Land Rover and Hummer vehicles, learn driving techniques to tackle ascents and descents, side-tilts and vehicle handling over rough or wet ground.

Manchester, VT: 20 minutes

British School of Falconry

A rare opportunity to learn how to handle and fly a hawk. Discover the role falconers play in the conservation of raptors and enhance your appreciation of these magnificent birds in their natural state. Manchester, VT: 20 minutes

Orvis Fly-Fishing

The program is directed towards fishing for trout – our most celebrated fresh water quarry. Manchester, VT: 20 minutes

Hildene

Visit Robert Todd Lincoln's Hildene: home of Abraham Lincoln's descendants until 1975. Tour the Mansion, hear 1908 Aeolian organ. Picturesque views from formal garden; trails, summer camps, farm animals, picnicking, exhibits, concerts, x-country skiing. Manchester, VT: 20 minutes

Historic Manchester's Fine Designer Outlets

Shop until you drop in Manchester at 100 plus designer outlets and craft shops in town. Manchester, VT: 20 minutes

Museums

American Museum of Fly Fishing: Collections, rare fly fishing items. Manchester, VT: 20 minutes

Bennington Museum: Collection of decorative arts, furniture, paintings and historic artifacts from Vermont and New England. Bennington, VT: 40 minutes

Shelburne Museum: Home to vast collections of fine and decorative arts, paintings, folk sculptures, weathervanes, decoys, and quilts. Shelburne, VT: 2 hours

Southern Vermont Fine Arts Center: Elizabeth de C. Wilson Museum is an exquisite fine arts museum with over 700 paintings, sculptures and works on papers. Manchester, VT: 20 minutes

Dining around the mountain

Outback, Bondville – 5 minute drive

Red Fox, Bondville – 5 minute drive

Three Clock Inn, South Londonderry – 10 minute drive

Garden Café, Londonderry – 15 minute drive

The Perfect Wife, Manchester – 20 minute drive

Sirloin Saloon, Manchester – 20 minute drive

Mistral's, Manchester – 20 minute drive

Johnny Seesaw's, Peru – 15 minute drive

Mika's, Manchester – 20 minute drive

Note: The above is a sampling of restaurants in the surrounding region.



Note: All Prices include: set-up, tear down and technician on-call. 6% Sales tax not included. Same day emergency delivery charge of \$50.00. Travel Cost: \$150. Rates subject to change without notice.

Video/Computer Equipment	In-Focus LCD Projector (1300 Lumen)	\$300.00 per day	\$900.00 per week
	Mitsubishi LCD Projector (2500 Lumen)	\$400.00 per day	\$1000.00 per week
	Toshiba Laptop Computer	\$200.00 per day	\$600.00 per week
	Remote Mouse	\$15.00 per day	\$60.00 per week
Screens	Da-Lite 6' x 6' Tripod Screen	\$30.00 per day	\$100.00 per week
	Da-Lite 7' x 7' Tripod Screen	\$30.00 per day	\$100.00 per week
	Da-Lite 8' x 8' Tripod Screen	\$30.00 per day	\$100.00 per week
	Da-Lite 6' x 8' Fast Fold Screen (rear)	\$60.00 per day	\$160.00 per week
	Da-Lite 7.5' x 10' Fast Fold (rear)	\$60.00 per day	\$160.00 per week
	Da-Lite 9' x 12' Fast Fold (rear)	\$90.00 per day	\$260.00 per week
Projectors	3M Overhead Projector	\$30.00 per day	\$140.00 per week
	3M Overhead Projector (Hi intensity)	\$50.00 per day	\$160.00 per week
	Kodak Slide Projector	\$40.00 per day	\$160.00 per week
	Kodak Wireless Remote for Slide	\$30.00 per day	\$100.00 per week
Video Equipment	Sony 27" TV	\$50.00 per day	\$175.00 per week
	VHS Recorder/Player	\$40.00 per day	\$120.00 per week
	Sony Mini Disc Player / Recorder	\$40.00 per day	\$160.00 per week
	JVC DVD Player	\$40.00 per day	\$160.00 per week
	A/V Cart	\$10.00 per day	\$40.00 per week
	TV/VCR/AV Cart Package	\$95.00 per day	\$335.00 per week
Meeting Aids	Laser Pointer	\$25.00 per day	\$100.00 per week
	Kodak Dissolve Kit	\$35.00 per day	\$100.00 per week
	Easel	\$10.00 per day	\$40.00 per week
	Easel, Flipchart Pad and Marker	\$20.00 per day	\$80.00 per week
	Polycom Speaker Phone	\$50.00 per day	\$100.00 per week
Audio	Sony Compact Disc Player	\$20.00 per day	\$80.00 per week
	Nakamichi Cassette Player	\$40.00 per day	\$120.00 per week
	4 channel Audio Mixer	\$75.00 per day	\$120.00 per week
	16 Channel Audio Mixer	\$125.00 per day	\$500.00 per week
	275 Watt AB Amplifier	\$50.00 per day	\$120.00 per week
	1600 Watt QSC Amplifier	\$75.00 per day	\$225.00 per week
Microphone		\$30.00 per day	\$80.00 per week
	Shure Wireless Mic Handheld	\$65.00 per day	\$220.00 per week
	Shure Wireless Mic Lavalier	\$65.00 per day	\$220.00 per week
	Sound System Crowds (150 or less)	\$125.00 per day	\$500.00 per week
	Sound System Crowds (150-200)	\$200.00 per day	\$800.00 per week
	Sound System Crowds (500+)	\$300.00 per day	\$1200.00 per week
	Microphone stand	\$15.00 per day	\$60.00 per week
Specialty Rentals	Superstrobe	\$30.00 per day	\$100.00 per week
	4 Ultraviolet Black Lights	\$30.00 per day	\$100.00 per week
	Fog Machine	\$40.00 per day	\$120.00 per week
	Vertigo Lighting	\$30.00 per day	\$100.00 per week
	Pin Spots	\$5.00 per day	\$20.00 per week
	Par 46 Wash Light	\$10.00 per day	\$40.00 per week
HI-Tech Light Show	4 Martin Roboscans (812) with Controller and stands	\$200.00 per day	\$1000.00 per week
Technician Hourly Rate (1 hour minimum)	Mon-Fri 7AM-5PM	\$35.00 per hour	
	Mon-Fri 5PM-12MID and Saturdays	\$45.00 per hour	
	Sunday	\$55.00 per hour	
	Holidays	\$75.00 per hour	